

CHAPTER BRIEFS

a newsletter for IEEE Society Chapters

August 2020

A Chapter is required to report and file not less than two (2) technical meetings per year. Changes to its roster of officers need to be submitted in a timely manner using electronic reporting tools provided by MGA <<http://vtools.ieee>>. Failure to hold/report meetings annually could result in dissolution of your chapter.

IEEE Consumer Electronics Society (CES) Name Change

Effective August 16, 2020, the IEEE Consumer Electronics Society (CES) formally changed its name to IEEE Consumer Technology Society (CTS). The field of interest of the IEEE Consumer Technology Society shall continue to be focused on engineering and research aspects of the theory, design, construction, manufacture or end use of mass market electronics, systems, software and services for consumers. The implementation of the society name requires all associated applications and programs to be changed to reflect the new name, which is in progress. All CES chapters now reflect the name change to CT08. This is a reminder to use the new name in your governance.

IEEE 2021 Renewal Cycle Begins

The IEEE renewal cycle for 2021 began on 16 August 2020. Consequently, you will see significant changes in the counts in OU Analytics within the Renewal Category dashboards accessible via the Memberships, Subscriptions, and More link in OU Analytics to reflect the start of the renewal year. OU Analytics can help you keep track of the status of renewals for 2021 on a daily basis. While the active counts for OUs will continue to be refreshed every day in OU Analytics, you will also be able to track the status of members in all grades, regions, and sections that renew for 2021. This includes members that are 1st year renewals, members that join for 2021, as well as former members (with at least 1 year lapse) that reinstate their membership for 2021. Memberships that are cancelled for 2021 will be counted in the "Product Deletions" column but remain in active status until the end of 2020. You will also be able to see the counts of non-renewals in the column titled "Not Yet Renewed" on the dashboard. Note that all members are initially categorized as Not Yet Renewed but these counts should continue to be reduced as members renew. All counts on the dashboards are dynamic and will be refreshed daily to reflect the changes resulting from member renewals. Screenshots of the renewal dashboards are available in the Chapter Briefs Tip-of-the-Month below.

Annual IEEE Student Elevation Program

The IEEE Student elevation is handled twice a year, in June and August. Once an IEEE Student member or Graduate Student member reaches his or her graduation date (based on information provided by the student), IEEE elevates them to the next grade of IEEE membership for which they qualify. The first elevation in 2020 was done in June (Student members or Graduate Student members with graduation dates between 1 January and 30 June 2020). The second elevation this year was completed on 16 August (Student members or Graduate Student members with graduation dates between 1 July and 31 December 2020). A total of 25,058 students were elevated this year. As a result, you will see changes in counts for these grades in monthly statistical reports and in OU Analytics. IEEE supports recent graduates by providing a 50% discount off IEEE dues the first year after graduation. This "recent graduate" discount is only available once in a lifetime. For additional information on the student elevation program, please contact student-services@ieee.org.

Call for Nominations: 2020 MGA Individual Awards Program Deadline 15 October

**** This message sent on behalf of Jason K. Hui, MGA Awards and Recognition Committee Chair ****

You can help recognize the efforts of outstanding volunteers by nominating individuals for one of the prestigious [IEEE Member and Geographic Activities \(MGA\) Awards](#). Each award has a unique mission and criteria and offers the opportunity to honor distinguished colleagues, inspiring teachers, and corporate leaders.

If you know someone who has made substantial regional IEEE volunteer contributions through innovative projects, exemplary leadership, service, or by fulfilling the goals as related to transnational activities, consider nominating them for one of the following awards:

- [MGA Larry K. Wilson Transnational Award](#)
- [MGA Innovation Award](#)
- [MGA Leadership Award](#)
- [MGA Achievement Award](#)
- [MGA Young Professionals Achievement Award](#)

Please visit the MGA Award nomination web page to [review the nominator guidelines and eligibility requirements](#). MGA awards are peer-recognized awards; therefore, self-nomination is not permitted.

The deadline for nominations is 15 October 2020 (for completed nomination form and two letters of endorsement).

[Nominate a colleague now](#)

MGA Awards & Recognition Program
mga-awards@ieee.org

IEEE COVID-19 News & Resources Hub

IEEE has established a single platform for all #COVID19 related resources to support our members during the pandemic. Access the latest virtual educational opportunities, free e-books, virtual networking, and more in one place by visiting:

IEEE-Branded Virtual Backgrounds for Video Conferencing Tools

IEEE has created IEEE-branded virtual backgrounds for video conferencing tools like Zoom and Microsoft Team. [Visit the page](#) to download the images and view instructions on how to upload the background images for meetings.

OU Analytics - A Valuable Resource for Volunteers

As a reminder for continuing chapter chairs and for incoming chapter chairs for 2020, we would like to highlight a valuable resource available to you. Launched in 2018, IEEE OU Analytics, is a web-based business intelligence tool which delivers essential metrics on memberships or subscriptions to OUs, including Societies, Councils, Technical Communities, etc. Using Tableau platform, the intuitive interface leverages visualization technology to present data in multidimensional tables and charts. The landing page provides easy access to various dashboards which contains filters to refine by OU, Region, Section, Grade, and Gender. Counts provided on the dashboards can link directly to respective member contact details. The ability to search for one particular member by last name, first name or member number from the membership list is also available. Selected volunteer positions in respective OUs have automatic access to their OU's data.

Based upon members' renewal status, OU Analytics delivers key statistics for active, new, renewing or arrears members that can be sorted or refined using various filters. It eliminates the need for volunteers to create/run queries from a data set (previously through SAMIEEE) which can sometimes lead to incorrect results. Doublet (overlapping) society membership and technical community/technical council data are also available.

The OU Analytics Geo Map offers geographic displays and interactive dashboard views of IEEE organization units. The Map provides key statistical facts by Region, IEEE/Society Member, Chapter, Student Branch, and Affinity Group and shows the concentration within all ten IEEE Regions. Hover over various views to display data counts. Data can be refined using the filters. The map also provides the ability to identify membership density for potential society chapters and student branches globally.

Data is updated daily and is pulled directly from IEEE's membership database, reflecting the most current information. Data and images can be downloaded using various formats. You will need your IEEE Account information to access. Please review the site for more information or feel free to contact us. There are recorded training webinars, presentations, FAQs, and Users Groups readily available to you as a resource, and one-on-one sessions can be scheduled, upon request.

- <http://www.ieee.org/ouanalytics>

OU Analytics Webinar Training Available: To receive customized or personalized training for a better understanding of how to use OU Analytics, please email ouanalytics@ieee.org or tad-chap-dev@ieee.org.

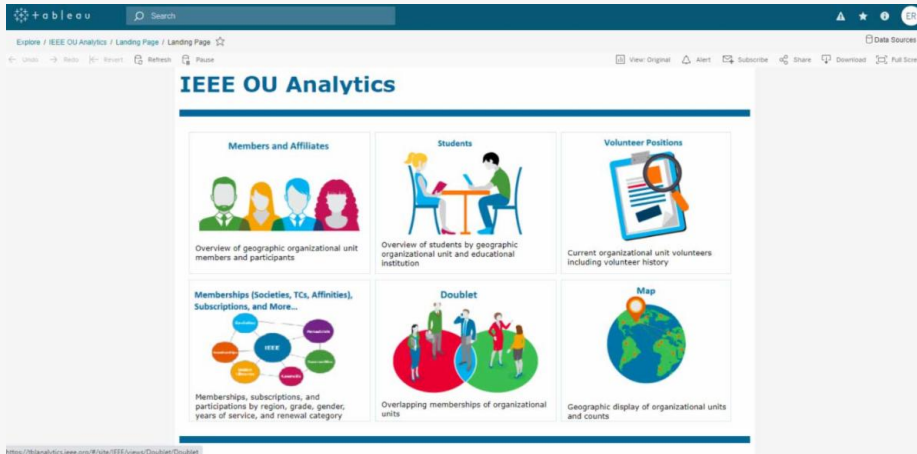
OU Analytics - Tip of the Month

Each month, the Chapter Briefs Newsletter will feature an OU Analytics Tip that will be helpful to all who utilize the OU Analytics tool. This month's Tip features obtaining Renewal Data.

This feature provides interactive views for memberships, communities, councils, online libraries, and periodicals. Refined data can be obtained by utilizing the filters (i.e., Renewal Category) as displayed in the screenshots below.

Please click on the link below to access the screenshots.

[Renewal](#)



Payments to Chapters Processed through Local Section Bank Accounts

A process is in place to ensure that Section, Chapter and Society officers will be notified when a wire transfer is processed through a local Section bank account for a chapter that does not have its own bank account. The Society or Council administrative staff who is submitting the chapter payment request to IEEE Treasury will notify the Section, Chapter and Society Treasurers via email that a payment to that particular Section is in progress. The wire transfer will contain the GEO code of the Chapter to assist in identifying the final destination of the funds.

RESOURCES

- [IEEE Technical Chapters](#)
- [Volunteer Tools](#)
- [Volunteer Development](#)
- [Membership Development](#)
- [IEEE Member and Geographic Activities Operations Manual](#)
- [Tip of the Month Archive](#)

ABOUT THIS NEWSLETTER

This monthly Chapter Briefs newsletter provides information and resources to volunteers and staff of IEEE Society and Council chapters.

[Contact & Support](#) | [Privacy & Opt Out](#) | [Terms & Conditions](#) | [Nondiscrimination Policy](#)

IEEE Chapter Briefs

© Copyright 2019 IEEE - All rights reserved. Use of this Web site signifies your agreement to the terms and conditions.

A not-for-profit organization, IEEE is the world's largest technical professional organization dedicated to advancing technology for the benefit of humanity.